

STEIN EX Z2 300

Industry Grade Lighting

!Heat-High Voltage-Peak-Protected
Does Not Produce Frequency Interference



OPTIONAL

Special Arrangements Can Be Made For Projects Including Different Sizes, Materials, Material Colors

OPTIONAL

Main Light And Emergency OR Second Color



Product Specifications

- Power Consumption.....: 27 Watt
- Standart Voltage Internal Driver.....: 24 VDC Protected 30 VDC
- Optional Driverless.....:
- Light Source Led.....:
- Dimmable.....: PWM, Voltage, Current
- Luminous Flux.....: 4.670 Lumens
- Optional**: 220 VAC OPTIONAL

Dimensions

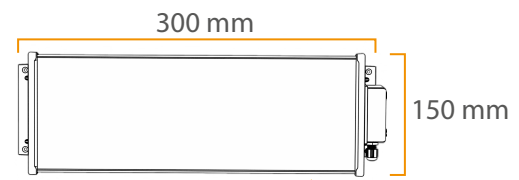
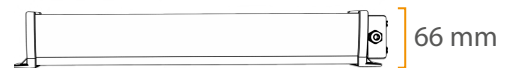
Temp Control



Does Not Cause fire



Voltage Limit



Material Colors

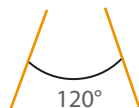


ELECTRO STATIC PAINTED SIDE COVER



ALUMINUM BODY

Light Angle



Area Of Application

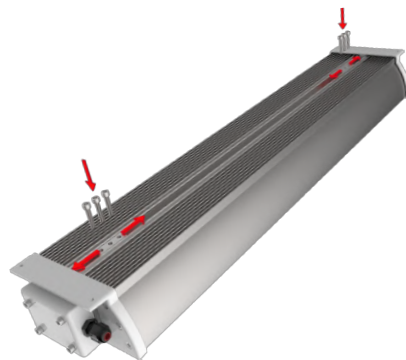
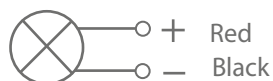
Interior Exterior **Engine rooms**

The Driver Is Protected In An Aluminum Housing

Optional Connection



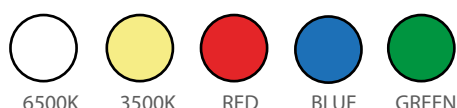
Standart Connection



Mounting

You can align and mount the moving assembly parts to the holes in the mounting location.

Light Colors



Certifications

